

# Series DFG Rings



## MATERIAL COMPOSITION AND APPLICATION

**Series DFG** (Die Formed Graphite) **Rings** are available in the following grades of expanded graphite: industrial grade (min 95% graphite content), **industrial grade with oxidation, and corrosion inhibitors**, and **nuclear grade**. **Series DFG Rings** are press molded into a customer specific shapes, achieving tolerances of  $\pm .001"$ . According to working conditions, it can be reinforced with wire mesh on the middle, top and bottom of the ring. **Series DFG Rings** can be used to seal hot water, high temperature transfer fluid, ammonia, hydrogen gas, organic solvents, hydrocarbons, cryogenic liquids (LN, LHe, LNG, LPG, etc.).

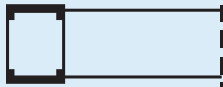
**PS-790**  
Expanded graphite die-formed ring



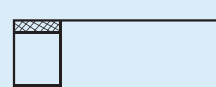
**PS-790 (B)**  
Expanded graphite ring reinforced by metal cover on ID & OD



**PS-790 (C)**  
Expanded graphite ring with reinforced metal cover top and bottom



**PS-791**  
Expanded graphite ring reinforced by wire mesh on top and bottom



**PS-790 (R)**  
Expanded graphite ring with reinforced wire mesh



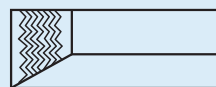
**PS-791 (R)**  
Expanded graphite self sealing die-formed ring



**PS-791 (C)**  
Expanded graphite die-formed ring with reinforced metal cover top and bottom



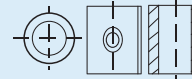
**PS-790 (C)**  
Expanded graphite self sealing ring reinforced by metal strip or wire mesh



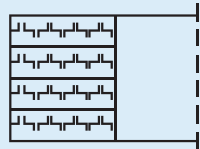
**PS-792**  
Expanded graphite die-formed ring with self-sealing ring



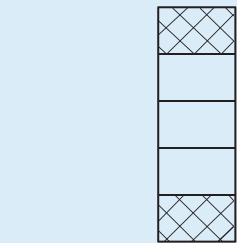
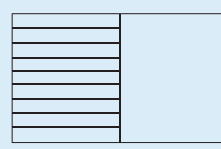
**PS-796**  
Expanded graphite ring with SS304 oval or round eyelet



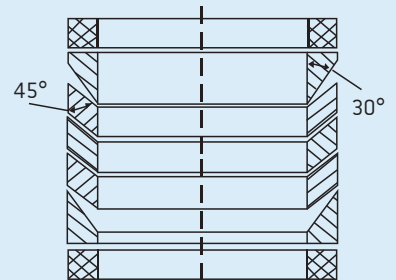
**PS-798 (T)**  
Expanded graphite die-formed ring with SS316 tangented insert



**PS-798 (R)**  
Expanded graphite gasket and SS316 flat formed ring



**PS-799**  
This packing uses each yarn wire mesh jacketed graphite packing rings on the top and bottom. The middle contains pure graphite rings.



**PS-780**  
Carbon fiber packing on both top and bottom, second ring on top and bottom with high density self-sealing ring at 30°, middle packings filled with low density of graphite ring at 45°.

<b>Density</b>	1.2~2.0 g/cm <sup>3</sup>
<b>Carbon content</b>	98~99.8%
<b>Sulphur content</b>	200~1200 PPM

<b>Chlorine content</b>	30~50PPM
<b>Temperature</b>	240~560°C
<b>Ignition loss</b>	0.2~0.8%

<b>Pressure</b>	20~50MPA
<b>Compressibility</b>	10~25%
<b>Recovery</b>	≥35%



1150 Guadalupe Drive · Cibolo, Texas 78108  
800-394-7846 · Fax: 210-314-2295



[www.topog-e.com](http://www.topog-e.com)  
[info@topog-e.com](mailto:info@topog-e.com)

All information in this data sheet is based on data believed to be reliable; however, we make no guarantee or warranty of the performance Series DFG. Due to numerous application-specific factors that can influence service life, it is always advisable to first test Series DFG in a particular application to determine their ultimate suitability.

[www.ogsupply.com](http://www.ogsupply.com)  
[info@ogsupply.com](mailto:info@ogsupply.com)